



Welcome to Hunstanton

Popular with visitors since Victorian times, the classic resort of Hunstanton which was purposely built in 1846 by local landowner Henry Styleman Le Strange provides a cherished mix of Victorian charm, coupled with plenty of opportunities for [fun, play and excitement](#). Hunstanton is proud of its far reaching appeal with thousands of day trippers and holidaymakers; young and old coming to enjoy what the resort has to offer, including the spectacular sunsets.

There are two sides to Hunstanton; the main resort of Hunstanton is famed for its distinctive striped cliffs (voted in 2014 as one of 100 Great Geosites in the country by the Geological Society) and [fabulous beach](#) which offers ideal conditions for playing on the sand, exploring rock pools and enjoying the sea. Only a mile further along the coast to Old Hunstanton, the quieter, more traditional face of the resort has more of a village feel with cottages built of Norfolk carrstone.

You can walk from one resort to the other, enjoying the views of the beach and sea, and taking in the exhilarating water sports action in this vast playground.

The town also hosts a range of popular annual [events](#) including the Hunstanton & District Festival of Arts, Hunstanton Carnival, the Hunstanton Kite Festival and much more.

Key features of Hunstanton are the beautiful gardens and cliff top walk. In 2019 Hunstanton was a winner of a Gold Award for RHS Britain in Bloom as well as a Gold Award and overall winner in the Coastal Resort Category of Anglia in Bloom. With the beautiful Esplanade Gardens, Boston Square Sensory Park and The Spinney, as well as the beautiful cliff top walks to Old Hunstanton, the resort has lovely outdoor spaces to enjoy, as well as the beach.

Hunstanton provides an excellent base to [explore the coast](#) and countryside. For walkers the beautiful Norfolk Coast Path starts from Hunstanton. At nearby Holme-next-the-Sea you can also head inland through the heart of the idyllic West Norfolk countryside on the historic Peddars Way. Close by cyclists can challenge themselves by following the National Cycle Network Route 1.

The special environment of West Norfolk provides some of the finest [nature reserves](#) in the country and Hunstanton provides the perfect touring base for outstanding opportunities for bird watching at both the RSPB reserves at Titchwell and Snettisham.

Neighbouring Heacham with its pleasant village and extensive sandy beach is well worth visiting. Away from the coastline itself there are a host of great [attractions](#) to visit such as; Norfolk Lavender, Snettisham Park, Bircham Windmill and Royal Sandringham.



Hunstanton

M I N I G U I D E

Resort Services

At Hunstanton and nearby Heacham, the Borough Council of King's Lynn & West Norfolk provides a range of services for the safety and welfare of visitors in summer months including a beach patrol service on the south prom. The Beach Office next to Alive Oasis operates a first aid and a lost child service. Times vary. Hunstanton beach was again awarded the coveted Seaside Award for 2021, for high standards of cleanliness, beach management and facilities.
Tel: 01485 535150

Alive Oasis

Alive Oasis with its wide selection of action-packed facilities is the perfect location for a fun-filled family day out. From the twists and turns of the aqua slide to the warm waters of the main pool, sunshine and laughter is guaranteed in our tropical paradise. The shallow toddler pool is the perfect place to introduce your little ones to the water.

Alive Adventures is Hunstanton's most exciting all-weather children's play space! The indoor play area will provide hours of fun. Suitable for under 10s and those under 142cm tall.

If you're looking for an outdoor activity that the whole family can enjoy together why not try our roller skating rink.

With its outdoor terrace seating area, the Alive Café is the perfect place to relax and enjoy panoramic sea views.

Open daily throughout the year. alivewestnorfolk.co.uk
Tel: 01485 534227

Hunstanton Heritage Gardens

Esplanade Gardens received funding from the Heritage Lottery Fund to deliver the Hunstanton Heritage Gardens project in 2017, restoring and enhancing the Victorian gardens, surrounding Greens and Cliff Top areas. With stunning views from the new 'Lookout' viewing platform, large open play area for families to enjoy and traditional crazy golf and putting greens the gardens are a great place for everyone to relax. Hunstanton's relationship with the sea and its history are brought to life with photographic tiles, information boards and signposted walks.

A packed programme of events runs from April onwards to compliment the restoration project with activities ranging from Bug hunts to ceramic workshops and Nordic walking to the Soap Box Derby. To find out more visit www.west-norfolk.gov.uk/hunstantonevents

Events

For details of events and entertainment in and around Hunstanton, visit our comprehensive online Events & What's On section at www.visitwestnorfolk.com. Event organisers can contact Resort Services to plan an event in the resort.

Watercraft Permits for Power Boat Ramp Users

All users must obtain a permit before they can launch. Permits can be obtained from Resort Services at Alive Oasis. Users must show data tag number (jet skis), name of boat (powered boats) and valid insurance. For powered boats and jet skis, RYA Level 2 must be held by each driver and a SBDA certificate for British water ski members
Tel: 01485 535150 for more details.

Dog Owners

From 10th April - 31st October, dogs are not permitted on the beach from the power boat ramp, to the northern extremity of the promenade at any time. Dogs on the promenade must be kept on a lead at all times. Under the dog fouling legislation dog owners are required to remove dog faeces deposited by their dogs wherever they are in Hunstanton.

Tourist Information Point (TIP)

Located within Hunstanton's Alive Oasis venue, the Tourist Information Point is handily situated along the central promenade, directly overlooking the main beach.

The TIP is open 7 days a week throughout the year. Times can vary according to season. Please call Alive Oasis or check the venue's website for exact opening times depending on when you want to visit.

alivewestnorfolk.co.uk **Tel: 01485 534227**

The TIP contains a wide variety of visitor information leaflets and brochures containing information on places of interest and attractions; town walks, heritage trail leaflets, national guides and maps of the area.

Public Transport

For details of the Coastliner bus service as well as other local and national bus information phone **Traveline: 0871 200 2233**. Alternatively call into the TIP for bus timetables. See map overleaf for bus station.

Market Days

Sundays & bank holiday Mondays all year.

All markets are held on the Southend Car Park, (on the Seafront), Stalls open by 8am and close around 3pm.

Email: markets@west-norfolk.gov.uk Tel: 01553 616202

Early Closing Day

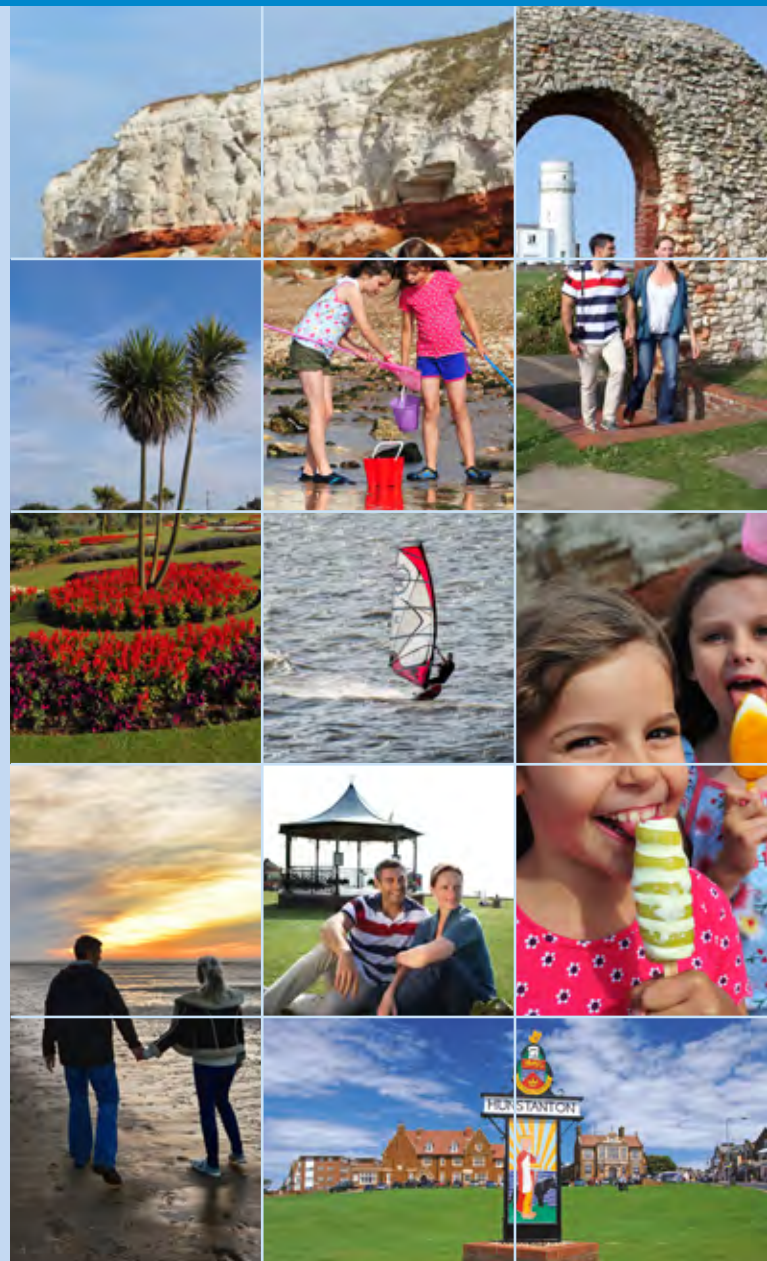
Officially half day closing is Thursday, but most shops do stay open.



Borough Council of
King's Lynn &
West Norfolk



1390-78-7



- 1 Bowling Green***
Enjoy a game of bowling with magnificent views of the beach. Twelve grass lanes are available to hire daily from 1st May. Bookings and equipment hire available at the crazy golf pavilion.
- 2 Putting, Crazy Golf and Play Area**
Brush up on your putting skills or try out the crazy golf course. Open daily 1st April to 30th September and school holidays during October. Group bookings: 01485 535150
- 3 Boston Square Sensory Park**
A beautiful landscape providing a small park for all which stimulates the senses of sight, smell, hearing and touch, designed with disabled users in mind.

- 4 Esplanade Gardens**
This beautiful garden provides a blaze of colour in spring and summer which is an ideal spot to simply relax and breathe in the fresh sea air.



- 5 Day Chalets**
A guaranteed haven from the summer crowds and a perfect base for a family day trip to the beach. Three chalets normally available from 1st April to 31st October. Please call for chalet availability. Tel: 01485 535150

- 6 The Green & The Band Stand**
The heart beat of the resort with excellent views of the Wash and amazing sunsets. Live music performances often take place on the Bandstand during the summer months.

- 7 Alive Oasis**
See overleaf.

- 8 Roller Skating***
A fun outdoors roller skating rink for the whole family to enjoy. Weather permitting and located within the Alive Oasis grounds, the skating rink is suitable for all ages.

- 9 The Princess Theatre**
Situating in the heart of the resort, The Princess Theatre has long traditions as a popular live entertainment venue. Tel: 01485 532252.

- 10 Tourist Information Point**
See back cover.

- 11 Sea Life Sanctuary**
A spectacular indoor aquarium also featuring a seal rescue centre and penguin beach all combine to provide a great family attraction. www.visitsealife.com/hunstanton



- 12 Blackbeard's Adventure***
On the Southern Promenade discover, enjoy an 18-hole golf themed adventure course playing your way through a pirate and Aztec setting. Open daily throughout the summer season.

- 13 Fun Fair***
Along the South Promenade discover a mixture of rides and stalls for all the family to enjoy.

- 14 Seal Safari & Sea Tours***
Unique and exciting guided seal safari for all ages provides a fascinating and fun insight into discovering the coastal environment of the Wash. For tour times contact Tel: 01485 534444.

- 15 Sea Front Traders**
Along the promenade to the south beach, there are numerous stalls selling all the seaside favourites, including food and souvenirs.

- 16 Shopping & Markets**
There are over 100 shops within the town centre ranging from the well known to the long established independent shops. Bargain hunters should not miss visiting the market. See back cover for details.

- 17 Seaside Amusements**
There are various entertainment arcades, souvenirs and gift shops around the town, including The Fabulous Showboat, Thomas's No.1 Bingo and Pier Family Entertainment.

- 18 Searles Resort Golf & Country Club**
Includes 27 holes of golf including a challenging 9 hole golf course and the championship length Heacham Manor. Also available are tennis courts, bowls green, fishing lakes and crazy golf.

- 19 Water Sports***
The West Norfolk coast provides a vast playground to enjoy a variety of water sports, from sailing and jet skiing to the excitement of windsurfing, kite surfing and waterskiing. Hunstanton offers some of the best conditions in the country for these popular sports.

The local sailing and waterskiing clubs have regular racing and events such as the British Waterski Racing Championships. Learn to kitesurf or windsurf and for the less adventurous you can hire a sea kayak or pedalo.



For more information contact:
Hunstanton Sailing Club
www.hunstantonsc.co.uk
Tel: 01485 534705 (weekends)

- 19b Hunstanton Ski Club**
www.hunstantonskiclub.com

- 19c Hunstanton Water Sports**
www.hunstantonwatersports.com
Tel: 01485 534455
Operates a watersport school for kitesurfing, windsurfing and paddleboard lessons. Please call to book.

- 19d Hunstanton Kayaks**
www.hunstantonkayaks.co.uk
Tel: 07810 188165
Private hire, tuition or group trips available.



- P** Parking
Bus Bus Station
♿ Accessibility Toilets
♿ S Seasonal Toilets
👶 Baby Changing Facility
🐎 Beach Pony Rides
🚤 Powerboat Launch Ramp
⚓ Sailing & Launch Area (Not Powerboats)

© Borough Council of King's Lynn & West Norfolk 2021. All the information published is believed to be correct at the time of going to press, however the publishers cannot be held responsible for any errors.

- ▲** Youth Hostel
HCC Hunstanton Community Centre
■ Main Retail Area
■ Dog Restriction Zone
■ Public Open Space

*** These attractions are weather permitting**

- 20 Start of Norfolk Coast Path**
From the end of North Promenade the National Trail follows 84 miles of beautiful coastal path flowing through the designated Area of Outstanding Natural Beauty to Hopton-on-Sea.

- 21 Coastliner Bus Stop**
A great way to explore the coast, using this popular service to travel between Hunstanton and Wells. Ideal for leaving the car behind and discovering this beautiful coastline.

- 22 St Edmund's Chapel Remains**
The chapel dates back to 1272 and celebrates the reputed visit by St Edmund in 855. An interpretation panel explains more about the remains. Also see **34** below.

- 23 Lighthouse**
Built to warn shipping of dangerous sandbanks in the Wash, the first Lighthouse was built here in 1666. The current building dates back to 1844 and is now used as self-catering holiday accommodation.

- 24 Land Train**
Runs from Searles Leisure Resort to Cliff Car Park with various drop off points including The Green.



- 25 Heritage Trails**
The walking trails allow visitors to discover the hidden gems of Hunstanton's heritage, spectacular coastline and the charming village of Old Hunstanton. Copies of the popular Hunstanton Guide Book available from the Hunstanton Heritage Centre.

- 26 Striped Cliffs**
Norfolk carrstone and red and white chalk combine to produce the magnificent striped cliffs to the north of the town.

- 27 Le Strange Old Barns**
Situating in Old Hunstanton, a fine display of local watercolours, antiques and collectables, plus working pottery and visiting craft demonstrations.

- 28 Lifeboat Station**
Follow the path to the beach from Old Hunstanton beyond the Le Strange Arms Hotel. The Lifeboat Station is open to visitors every Sunday between 8.30am – Noon.

- 29 Old Hunstanton Beach**
To the north of the main resort, Old Hunstanton beach offers vast expanses of sand and shallow sea.

- 30 Pitch & Putt***
Open daily 1 April to 31 October (and school holidays during October). In the event of inclement weather please call 01485 535150 for more information.

- 31 Foot Golf***
Hunstanton's 9 hole Foot Golf course opened in 2015 alongside the Pitch & Putt. Open daily 1 April to 31 October (half term only during October). In the event of inclement weather please call 01485 535150.

- 32 The Spinney**
The Spinney which connects the High Street, bus station and routes down towards the seafront is a great place to relax. Look out for the feature wall of vintage photographs and performance area, a great location for community events.

- 33 Horticultural Trail**
The West Norfolk in Bloom Hunstanton Horticultural Trail includes well established gardens and lesser known corners where new gardens are taking root. Copies from the Alive Oasis TIP.

- 34 Start of Hunstanton Wolf Trail**
Explore the gardens and cliff top scenery to trace the story of St. Edmund and the legendary associations with the wolf. Free trail guide from the Alive Oasis TIP.

- 35 Hunstanton Heritage Centre**
Situating in the handsome former NatWest Bank on the corner of Greevegate and Northgate in the heart of the town, the Heritage Centre boasts an extensive collection of photographs and artefacts, as well as fascinating interactive displays about the history of Hunstanton. The Vault Cinema also offers visitors a choice of entertaining short films on the changing face of the town through the years.
Open on Wednesdays, Fridays, Saturdays, Sundays and Bank Holiday Mondays: 2pm – 4pm. Private group visits can also be arranged. Check website for more information: www.hunstantoncivicsociety.org.uk

Welcome to **Hunstanton**
www.visitwestnorfolk.com

WATCH OUT FOR SANDI STARFISH
to help families keep their children safe



Sandi Starfish was launched in 2014 by Norfolk Constabulary, supported by the Borough Council of King's Lynn and West Norfolk. You can find Sandi Starfish figures at the beach patrol hut on the promenade in Hunstanton town, as well as on the beach below the Cliff Top car park and another near the RNLI lifeboat station in Old Hunstanton with permission from the Le Strange Estate. Each location will be marked with a Sandi Zone number. Families are encouraged to make a note of the number of their zone that they can share with police should they become separated from their child.